



POMPA DOSATRICE A PISTONE TIPO R
 PLUNGER METERING PUMP TYPE R
 REGOLAZIONE MANUALE

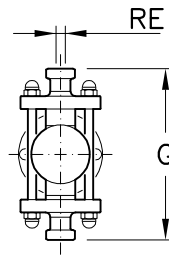
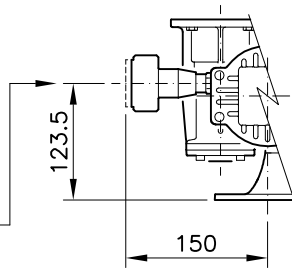
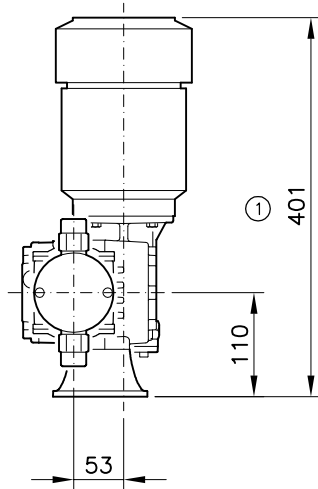
TAVOLA 7150	REV. 0	LINGUA I/E
SOSTITUISCE IL -	DATA 16/12/16	

MANUAL ADJUSTMENT

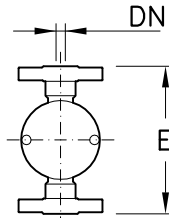
OVERALL DRAWING

REGOLAZIONE TRAMITE
 OROLOGIO GRAVITAZIONALE
 ADJUSTMENT BY MEANS OF
 GRAVITATIONAL WATCH

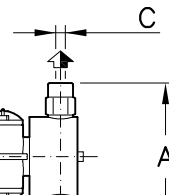
LETTURA REGOLAZIONE
 ADJUSTMENT READING



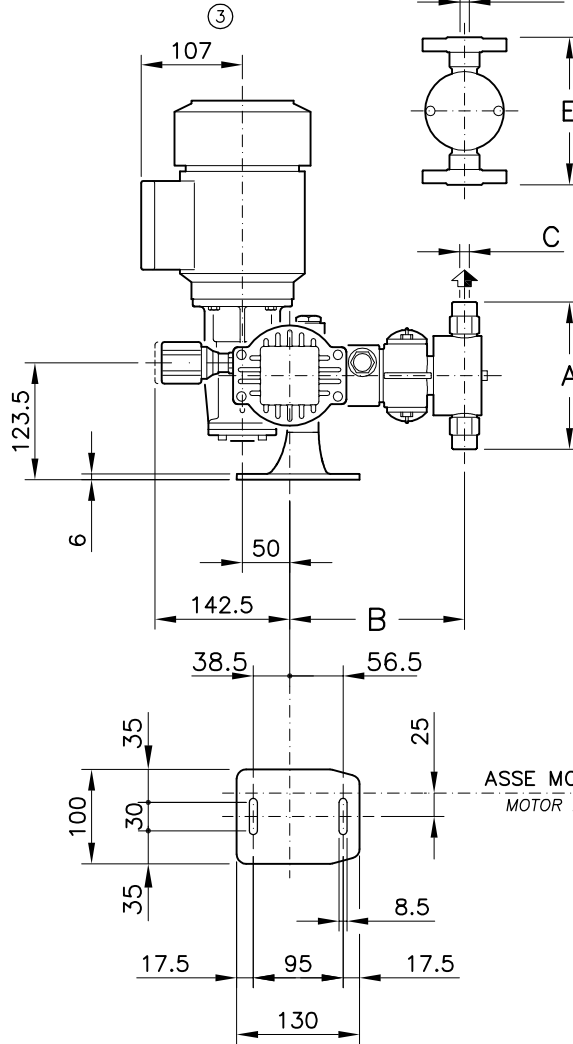
ATTACCHI
 IND. ALIMENTARE
 FOOD INDUSTRY
 CONNECTIONS



ATTACCHI
 FLANGIATI
 FLANGED
 CONNECTIONS



ATTACCHI
 FILETTATI
 THREADED
 CONNECTIONS



ASSE MOTORE
 MOTOR AXIS

DA	DT	GO	PR
UV	UA	UC	PcC
DISTRIBUZIONE			
CONTROLLATO ORIGINALE IN ROSSO			
DISEGNATO R. PRIOTTO			
LUT/PROG.			

DIMENSIONI IN MILLIMETRI
 DIMENSIONS IN MILLIMETRES

CORSA
 STROKE 15 mm

CORSE/1' 25-6-50-70-95-115 (50Hz)
 STROKES/1' 43-60-84-114 (60Hz)

PESO INDICATIVO
 APPROXIMATE WEIGHT 15±30Kg ②

ATTACCHI ALIMENTARI
 FOOD IND. CONNECTIONS DIN 11851

FLANGE UNI EN 1092-1 - AARH200
 FLANGES ANSI B16.5 - AARH200

MOTORI CVE UNEL-MEC 0.25/0.37kW 4Poli
 MOTORS 230/400/3/50Hz IP55 Cl.F IEC38

CON MOTORE EExd ① =440 ② +10Kg ③ =147
 WITH EExd MOTOR

REV.	MODIFICHE	CONTR.	DATA
------	-----------	--------	------

R	A (AISI-316L)													P (PVC)					DN UNI		DN ANSI			
	A		A		B	B TL	C BSPf	E		E		G	RE DN	A		B	C BSPf	E		AISI	PVC	AISI	PVC	
	SV	DV	SVTL	DVTL				SV	DV	SVTL	DVTL			SV	DV			SV	DV					SV
6	-	-	-	124	-	208	1/4"	-	-	-	100	-	10	-	140	207	1/4"	-	140	15	15	1/2"	1/2"	
10	-	159	-	133	184	207	1/4"	-	135	-	109	-	-	-	140	208.5	1/4"	-	140	15	15	1/2"	1/2"	
16	-	159	-	150	183	205	3/8"	-	135	-	126	-	10	-	200	183	3/8"	-	162	15	15	1/2"	1/2"	
25	121	159	112	150	183	205	3/8"	135	135	126	126	210	266	15	186	200	183	3/8"	162	162	15	15	1/2"	1/2"
30	121	159	112	150	186	205	3/8"	135	135	126	126	252	-	15	186	200	183	3/8"	162	162	15	15	1/2"	1/2"
43	132	170	-	-	185	-	3/8"	146	146	-	-	252	-	20	218	232	193	1/2"	194	194	15	15	1/2"	1/2"
50	156	208	-	-	189	-	1/2"	160	198	-	-	-	-	-	242.6	-	199	1/2"	204	-	15	15	1/2"	1/2"
62	202	-	-	-	204	-	3/4"	187	-	-	-	280	-	20	248.6	-	214	3/4"	210	-	20	15	3/4"	1/2"

QUESTO DISEGNO APPARTIENE ALLA OBL S.R.L. NESSUNA PARTE DI QUESTO DOCUMENTO PUO' ESSERE MODIFICATA, PRESTATATA, RIPRODOTTA O COPIATA. (INTERAMENTE O IN PARTE) - THIS DRAWING IS THE PROPERTY OF OBL S.R.L. NO PART OF THIS DOCUMENT MAY BE MODIFIED, LOANED, REPRODUCED NOR COPIED (WHOLE OR IN PART)